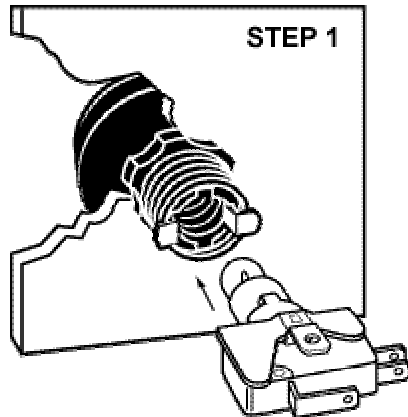
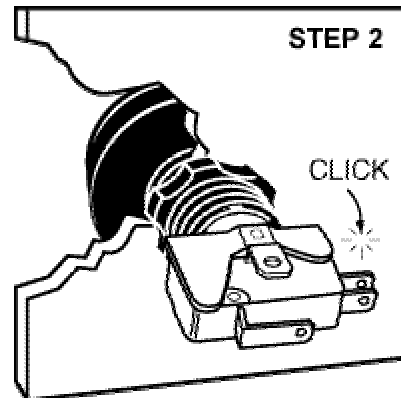


# Installing X-6000 Illuminated Pushbutton

Switch mounts in 15/16" hole



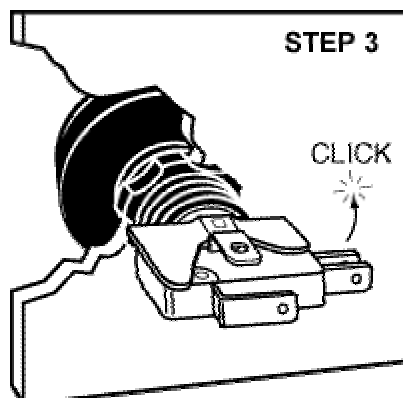
Insert Switch-Lampholder into barrel of button assembly



While applying slight pressure, turn Switch-Lampholder to right until it clicks into place.

## Mounting the Pushbuttons.

The Pushbutton is shipped assembled, but easily separates into two parts for mounting. To disassemble the Pushbutton, hold the bottom white switch part in one hand, and with the other hand hold the black threaded barrel. Twist to the left and pull the switch assembly out. Remove the mounting nut threaded onto the barrel section and set it aside. Now place the threaded barrel section into the 15/16" hole in the exhibit surface and secure it with the nut. Place the bottom white part back into the threaded section. A twist to the right will lock the switch assembly firmly in place. Do not press the button while mounting, as this will cause interference between the two pieces.



To remove, turn Switch-Lampholder to left and pull out.

## Museum Technology Source Inc.

323 Andover Street Wilmington MA 01887  
800-729-6873 978-657-3898 f 978-657-7132  
[www.museumtech.com](http://www.museumtech.com)